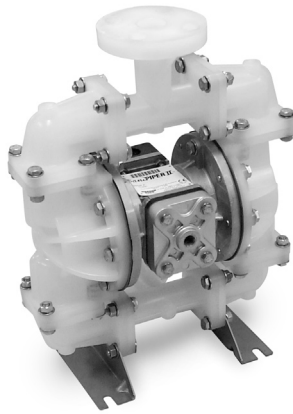


**WARREN
RUPP®**

Quality System
ISO9001 Certified

Environmental
Management System
ISO14001 Certified

IDEX
IDEX CORPORATION



U.S. Patent #5,851,109; 5,996,627;
400,210; 6,241,487
Other U.S. Patents Applied for



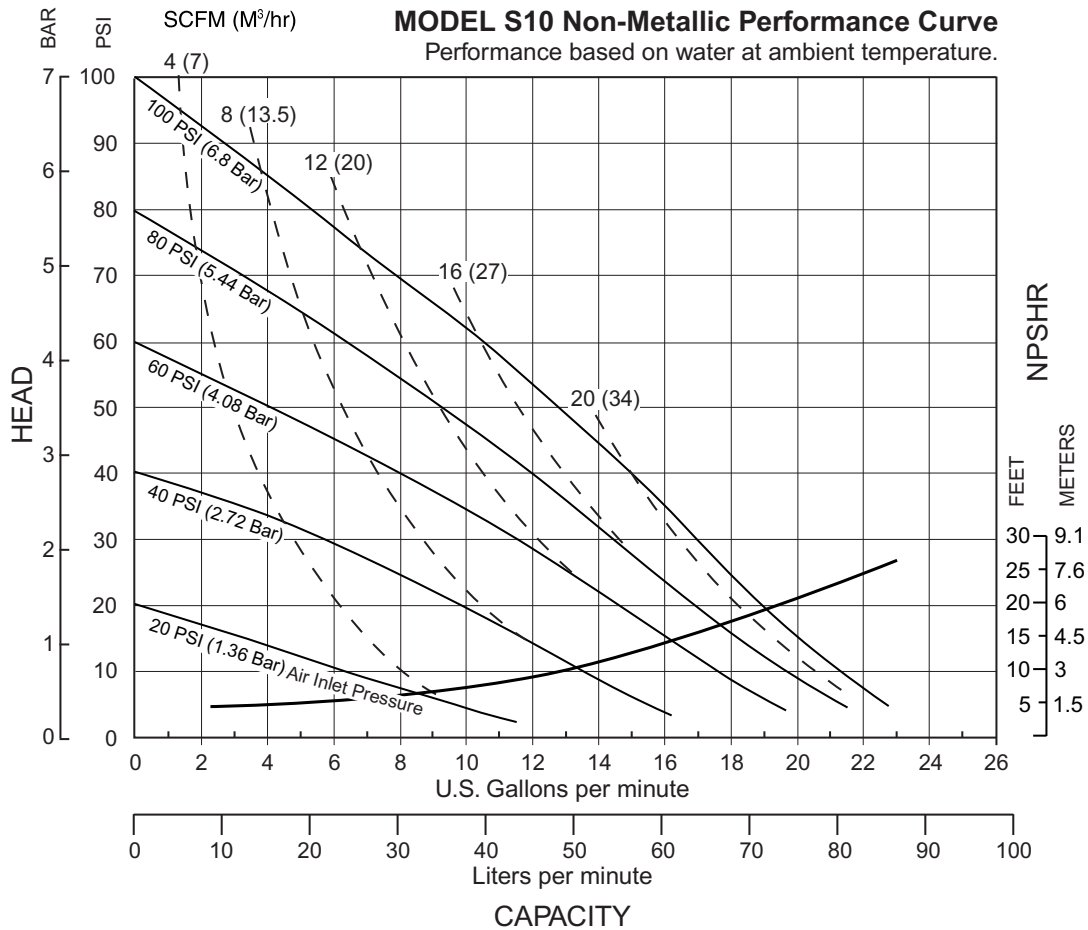
SANDPIPER®
A WARREN RUPP PUMP BRAND

**S10 Non-Metallic
Design Level 1
Ball Valve**

**Air-Powered
Double-Diaphragm Pump**

ENGINEERING, PERFORMANCE
& CONSTRUCTION DATA

| INTAKE/DISCHARGE PIPE SIZE | CAPACITY | AIR VALVE | SOLIDS-HANDLING | HEADS UP TO | DISPLACEMENT/STROKE |
|----------------------------|-----------------------------|-----------------------------|---------------------|---|--------------------------|
| Intake 1" ANSI Flange | Discharge 1" ANSI Flange | No-lube, no-stall design | Up to .15 in. (4mm) | 100 psi or 231 ft. of water (7 bar or 70 meters) | .026 Gallon / .098 liter |



SANDPIPER® pumps are designed to be powered only by compressed air.

Explanation of Pump Nomenclature

S10 Non-Metallic · Design Level 1· Ball Valve

| Type | Pump Brand | Pump Size | Check Valve Type | Design Level | Wetted Material | Diaphragm/Check Valve Options | Check Valve Seat | Non-Wetted Material Options | Porting Options | Pump Style | Pump Options | Kit Options | Shipping Weight lbs (kg) |
|-----------------|------------|-----------|------------------|--------------|-----------------|-------------------------------|------------------|-----------------------------|-----------------|------------|--------------|-------------|--------------------------|
| S10B1P1PPAS000. | S | 10 | B | 1 | P | 1 | P | P | A | S | 0 | 00. | 19 (9) |
| S10B1P2PPAS000. | S | 10 | B | 1 | P | 2 | P | P | A | S | 0 | 00. | 19 (9) |
| S10B1K1KPAS000. | S | 10 | B | 1 | K | 1 | K | P | A | S | 0 | 00. | 23 (10) |
| S10B1K2KPAS000. | S | 10 | B | 1 | K | 2 | K | P | A | S | 0 | 00. | 23 (10) |
| S10B1N1NPAS000. | S | 10 | B | 1 | N | 1 | N | P | A | S | 0 | 00. | 20 (9) |
| S10B1N2NPAS000. | S | 10 | B | 1 | N | 2 | N | P | A | S | 0 | 00. | 20 (9) |

Pump Brand
S= SandPIPER®

Pump Size
10= 1"

Check Valve Type
B= Ball

Design Level
1= Design Level 1

Wetted Material
K= PVDF
N= Nylon
P= Polypropylene

Diaphragm/Check Valve Materials
1= Santoprene/Santoprene
2= Virgin PTFE-Santoprene Backup/Virgin PTFE
7= Santoprene/Buna
8= Virgin PTFE-Santoprene Backup/FKM
Z= One-Piece Bonded/PTFE

Check Valve Seat
K= PVDF
N= Nylon
P= Polypropylene

Non-Wetted Material Options
P= Polypropylene
I= Polypropylene with PTFE Hardware

Porting Options
A= ANSI Flange

Pump Style
S= Standard

Pump Options
0= None
1= Sound Dampening Muffler
2= Mesh Muffler
6= Metal Muffler

Kit Options
00.= None
P0.= 10-30VDC Pulse Output Kit
P1.= Intrinsically-Safe 10-30VDC, 110/120VAC, 220/240VAC Pulse Output Kit
P2.= 110/120 or 220/240VAC Pulse Output Kit
E0.= Solenoid Kit w/24VDC Coil
E1.= Solenoid Kit 24VDC Explosion-Proof Coil
E2.= Solenoid Kit w/24VAC/12VDC Coil
E3.= Solenoid Kit w/24VAC/12VDC Explosion-Proof Coil
E4.= Solenoid Kit w/110VAC Coil
E5.= Solenoid Kit w/110VAC 60 Hz Explosion-Proof Coil
E6.= Solenoid Kit w/220VAC Coil
E7.= Solenoid Kit w/220VAC 60 Hz Explosion-Proof Coil
E8.= Solenoid Kit w/110VAC 50 Hz Explosion-Proof Coil
E9.= Solenoid Kit w/230VAC 50 Hz Explosion-Proof Coil
SP= Stroke Indicator Pins

 **CAUTION! Operating temperature limitations are as follows:**

| Materials | Operating Temperatures | | |
|---|------------------------|----------------|---------------------------------|
| | Maximum* | Minimum* | Optimum** |
| Santoprene®: Injection molded thermoplastic elastomer with no fabric layer. Long mechanical flex life. Excellent abrasion resistance. | 275°F 135°C | -40°F -40°C | 50°F to 212°F 10°C to 100°C |
| PTFE: Chemically inert, virtually impervious. Very few chemicals are known to react chemically with PTFE: molten alkali metals, turbulent liquid or gaseous fluorine and a few fluoro-chemicals such as chlorine trifluoride or oxygen difluoride which readily liberate free fluorine at elevated temperatures. | 220°F 104°C | -35°F -37°C | 50°F to 212°F 10°C to 100°C |
| PVDF: | 250°F 121°C | 0°F -18°C | |
| Polypropylene: | 180°F 82°C | 32°F 0°C | |
| Polyutethane: | 210°F 99°C | -40°F -40°C | -40°F to 210°F -40°C to 99°C |
| Nylon: | 180°F 82°C | 32°F 0°C | |
| FKM (Fluorocarbon): Shows good resistance to a wide range of oils and solvents; especially all aliphatic, aromatic and halogenated hydrocarbons, acids, animal and vegetable oils. Hot water or hot aqueous solutions (over 70°F) will attack FKM. | 350°F 177°C | -40°F -40°C | |

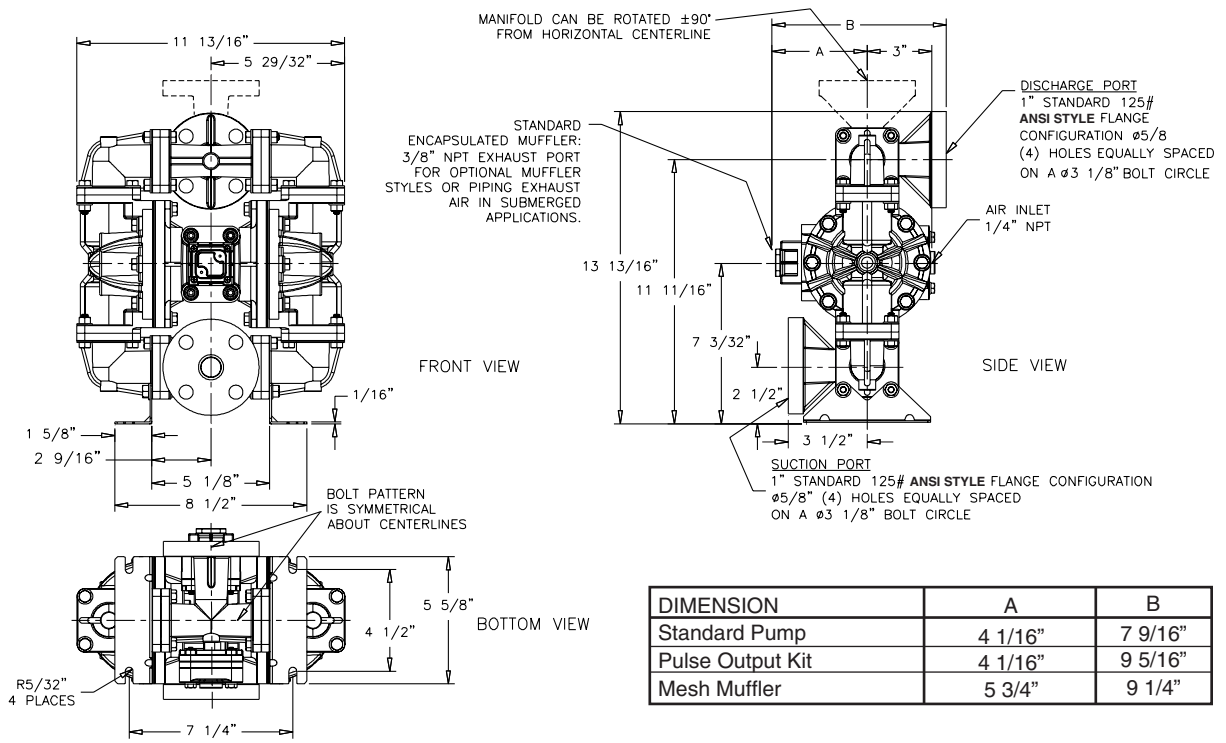
For specific applications, always consult "Chemical Resistance Chart" Technical Bulletin

*Definite reduction in service life.

**Minimal reduction in service life at ends of range.

Dimensions: S10 Non-Metallic

Dimensions in Inches
Dimensional Tolerance: $\pm 1/8"$



Dimensions in Millimeters
Dimensional Tolerance: ± 3 mm

