



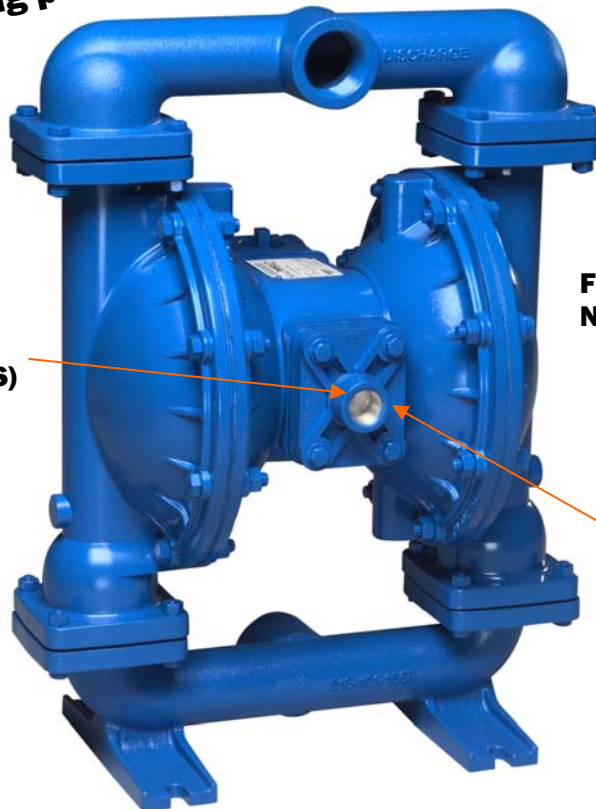
KelairPumps

S15 Metallic

SANDPIPER AIR-OPERATED DIAPHRAGM PUMPS

**5-year warranty
(wearing parts excluded)**

**Externally serviceable
air valve design (ESADS)**



**Fully bolted design
No clamp bands**

**No lube,
non-stall air
valve design
GUARANTEED**

FEATURES & BENEFITS

- Size: 1.5" BSPT
- Flow: 401 l/m
- Head: 8.6 bar
- Solids: Up to 6mm
- Wetted Materials
 - Aluminium
 - Cast Iron
 - 316 Stainless Steel
 - Hastelloy C
- Non-wetted Materials
 - Aluminium
 - Cast Iron
- Elastomer Options
 - Santoprene
 - Buna N
 - Teflon
 - Neoprene
 - EPDM
 - Viton

Call Kelair Direct 1300 789 466



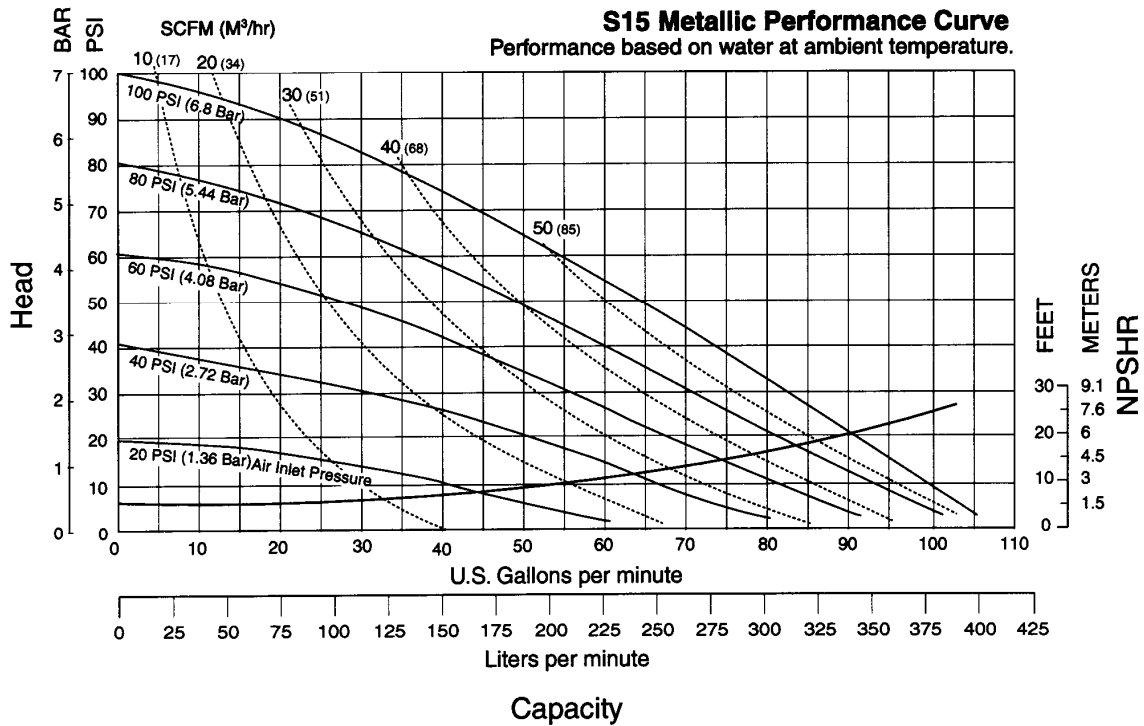


KelairPumps

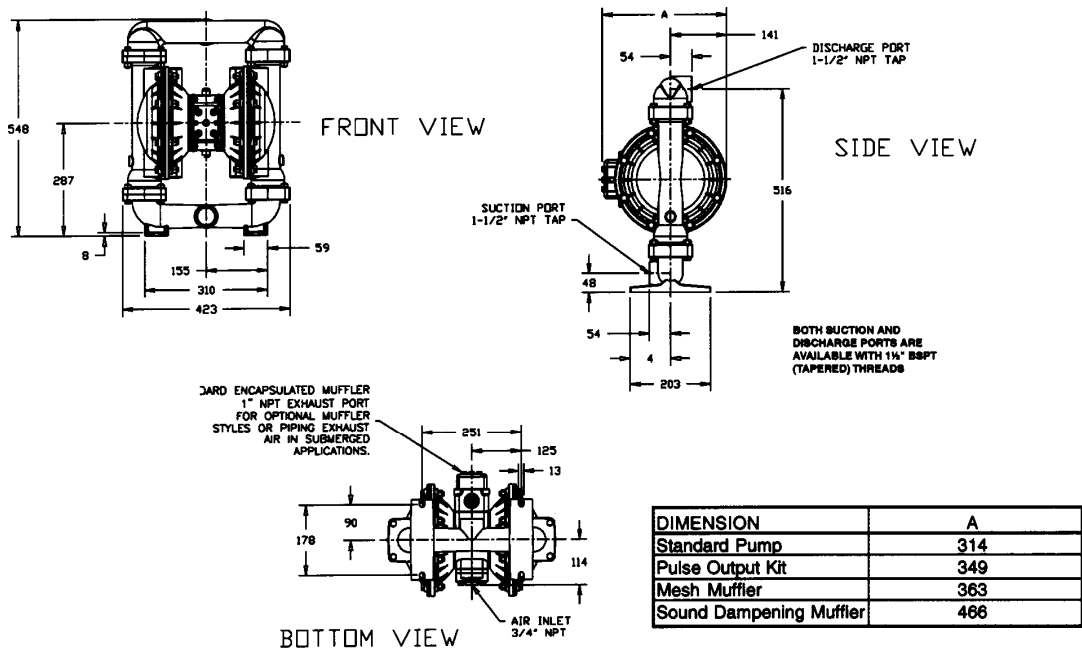
S15 Metallic

INTAKE/DISCHARGE PIPE SIZE 1 1/2" NPT (Internal) 1 1/2" BSPT Tapered (Internal)	CAPACITY 0 to 106 gallons per minute (0 to 401 liters per minute)	AIR VALVE No-lube, no-stall design	SOLIDS-HANDLING Up to .25 in. (6mm)	HEADS UP TO 125 psi or 289 ft. of water (8.6 kg/cm ² or 86 meters)	DISPLACEMENT/STROKE .41 Gallon / 1.55 liter
--	--	---	---	--	---

Sandpiper pumps are designed to be powered only by compressed air



Dimensions in Millimeters
Dimensional Tolerance: ± 3mm



Kelair Pumps Australia Pty Ltd Gateway Estate 215 Walters Road Arndell Park NSW 2148
 Call Direct: 1300 789 466 Fax: 02 9678 9455 ABN 28 001 308 381
 E: kelair@kelairpumps.com.au www.kelairpumps.com.au

SPS15Met-13-0308

